

Personnel Matters

Board of Directors – Open Agenda Item 4

May 17, 2012

Andreas Acker

a. Workforce Update

State Fund Staffing Summary Report As of March 31, 2012

	12/31/2006	12/31/2007	12/31/2008	12/31/2009	12/31/2010	12/31/2011	1/31/2012	2/29/2012	3/31/2012
Permanent Employees <i>(head count)</i>	8,800	8,257	7,909	7,660	7,305	5,665	5,586	5,457	5,291
Available Employees	8,607	8,051	7,687	7,460	7,096	5,497	5,411	5,275	5,138
Employees on Extended Leaves	193	207	222	200	209	168	163	170	153
Non-Permanent Employees	337	286	258	53	16	3	3	4	5
New hires (YTD)	279	273	240	109	23	15*	0	0	0
Promotions (YTD)	732	476	475	385	298	144	2	6	12
Separations (YTD)	1,004	861	522	340	398	1,638	32	211	367

* This number includes 1 limited term employee who turned into a permanent employee, 4 mandatory reinstatements, and 10 outside hires.

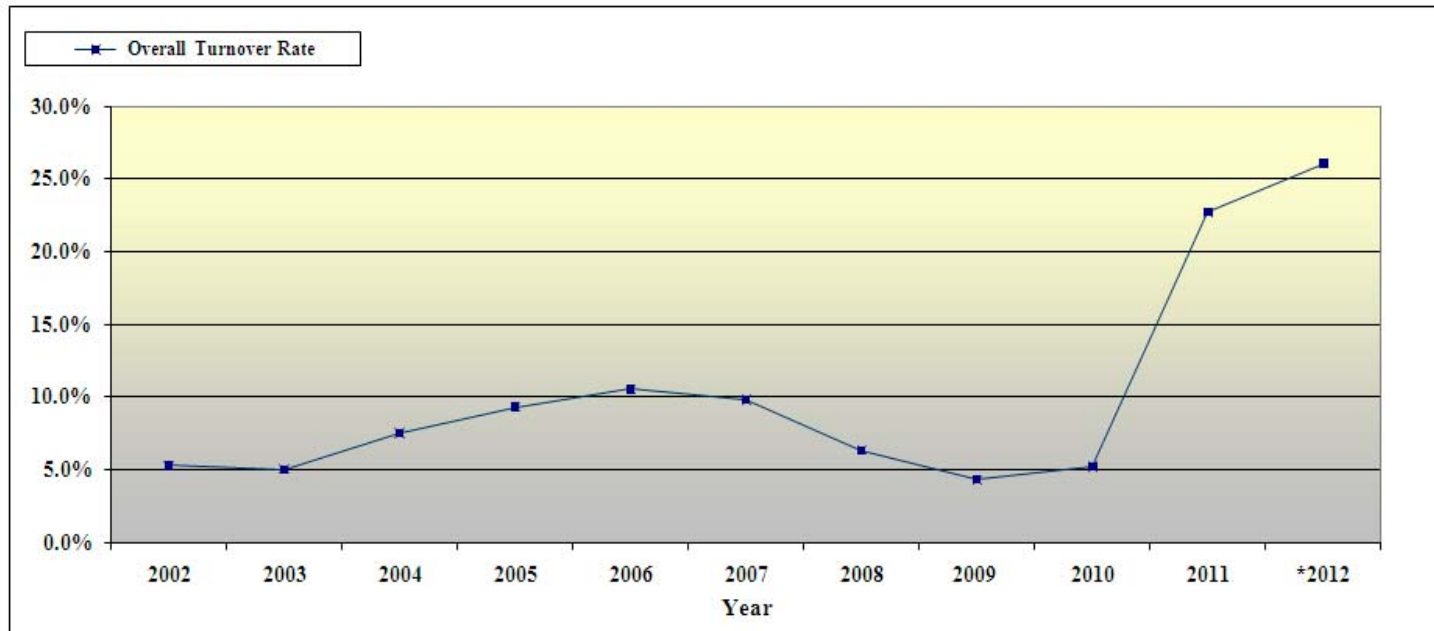
a. Workforce Update

State Compensation Insurance Fund Turnover By Year (As of March 31, 2012)

Year	2002	2003	2004	2005	2006	2007	2008	2009	2010	2011	*2012
Total Separations	368	391	664	893	1,004	861	522	340	398	1,638	367
Overall Turnover Rate	5.3%	5.0%	7.5%	9.3%	10.5%	9.8%	6.3%	4.3%	5.2%	22.7%	26.05%

* Total is calculated annually and as of the start of the year.

The 2010 YTD has been updated to reflect retirement separations that were not captured in the 1/7/11 extract due to delays with the State Controller's processing.



Separation Detail through April 27, 2012

- Total Separations: 449
- Transfers to other agencies: 337
- Resignations and Retirements: 112

b. Employee Leave Balance and Usage

As of March 31, 2012

All Leave Balance Types

LEAVE TYPE:	Annual Leave	Vacation	Personal Holiday	Holiday Credit	PLP	VPLP	CTO	Excess	SICK	HIT
2007 YTD	657,583	1,397,958	55,352	37,064	96,360	50,370	15,161	18,628	2,128,272	21,233
2008 YTD	617,382	1,387,913	58,824	22,636	81,247	51,410	18,146	22,892	2,048,398	23,173
2009 YTD	641,435	1,534,979	56,568	41,063	67,975	43,507	19,495	23,785	2,038,082	19,124
2010 YTD	559,547	1,490,902	58,440	74,516	56,861	41,668	13,765	24,917	1,950,391	20,697
2011 YTD	478,916	1,346,017	48,728	33,355	40,985	29,816	11,420	21,850	1,653,486	18,704
2012 YTD	462,435	1,320,901	40,656	69,277	37,894	27,591	9,788	23,762	1,576,879	11,720

All Usage for All Leave Balance Types

LEAVE TYPE:	Annual Leave	Vacation	Personal Holiday	Holiday Credit	PLP	VPLP	CTO	Excess	SICK	HIT
2007 YTD	(338,519)	(1,022,505)	(55,872)	(64,782)	(37,218)	(87,617)	(11,362)	(36,071)	(784,629)	(35,512)
2008 YTD	(373,552)	(1,333,280)	(60,912)	(14,952)	(15,427)	(82,446)	(17,791)	(54,053)	(716,982)	(29,857)
2009 YTD	(281,732)	(750,378)	(63,696)	(44,880)	(13,293)	(57,773)	(11,878)	(54,809)	(616,737)	(34,220)
2010 YTD	(243,388)	(816,032)	(53,136)	(24,902)	(8,594)	(58,898)	(14,942)	(47,471)	(530,162)	(26,030)
2011 YTD	(192,084)	(604,401)	(46,136)	(74,753)	(7,664)	(38,397)	(7,574)	(38,675)	(449,459)	(20,392)
2012 YTD	(36,229)	(108,039)	(5,072)	(3,538)	(1,151)	(6,860)	(1,583)	(8,327)	(103,066)	(4,043)

Historical Summary

Leave Over the 640 Cap - Historical Summary

Year	Hours Over Cap	(Hours) Change in %	Employees Over Cap	(Head Count) Change in %
2007	318,119	-	831	-
2008	258,237	-18.8%	748	-10.0%
2009	277,956	7.6%	856	14.4%
2010	231,184	-16.8%	808	-5.6%
2011	199,024	-13.9%	760	-5.9%
2012	200,505	0.7%	789	3.8%

640 Hour Cap

- Slight increase in hours and number of employees not unexpected
 - Few take vacation during the 1st qtr of the year
 - Consistent with past years
- Numbers generally drop substantially during the summer

640 hour Cap Summary

As of March 31, 2012

Annual Leave & Vacation over the 640 Cap

LEAVE TYPE:	Hours Over Cap	# of EE's	Average Hours Over Cap	Liability Amount
<i>Total</i>	200,505	789	254	\$ 7,682,563

Over the 640 Cap for Rank and File Employees

LEAVE TYPE:	Hours Over Cap	# of EE's	Average Hours Over Cap	Liability Amount
<i>Total</i>	92,597	483	192	\$ 3,281,483

Grand Total over the 640 Cap for Exempt, CEA, Managers and Supervisors

LEAVE TYPE:	Hours Over Cap	# of EE's	Average Hours Over Cap	Liability Amount
<i>Total</i>	107,908	306	353	\$ 4,401,080

The table below lists the monthly Annual Leave and Sick Leave/Vacation accrual rates for a full-time employee in **Bargaining Units 1, 2, 4, 10, 12, 13, 14, 15 and 17**:

Length of Service	Annual Leave	Vacation + Sick Leave (8 hours)
1 month to 3 years	11 hours	15 hours (7 hours + 8 hours)
37 months to 10 years	14 hours	18 hours (10 hours + 8 hours)
121 months to 15 years	16 hours	20 hours (12 hours + 8 hours)
181 months to 20 years	17 hours	21 hours (13 hours + 8 hours)
241 months and over	18 hours	22 hours (14 hours + 8 hours)

The table below lists monthly Annual Leave and Sick Leave/Vacation accrual rates for a full-time employee designated **supervisory, managerial or confidential or other excluded employees**:

Length of Service	Annual Leave	Vacation + Sick Leave (8 hours)
1 month to 3 years	15 hours	15 hours (7 hours + 8 hours)
37 months to 10 years	15 hours	19 hours (11 hours + 8 hours)
121 months to 15 years	17 hours	21 hours (13 hours + 8 hours)
181 months to 20 years	18 hours	22 hours (14 hours + 8 hours)
241 months to 25 years	19 hours	23 hours (15 hours + 8 hours)
301 months and over	20 hours	24 hours (16 hours + 8 hours)